

To view this email as a web page, [go here](#)

To ensure future delivery of emails please add [marcomm.emea@belden.com](mailto:marcomm.emea@belden.com) to your safe sender list or address book



**Issue 2, November 2008**



## **Belden Structured Cabling Solutions**

The Belden brand is synonymous with high quality, high performance and reliability. Belden products and services cover the following markets – buildings, industrial, infrastructure, broadcast, transport and residential.

Belden offers a wide range of signal transmission products that include networking cables, components and connectivity. Collectively they are designed to deliver high quality performance enhancing the overall capability of the network.

In this newsletter we provide an overview of our latest technology advances, structured cabling products and industry related information. We welcome your feedback.

## **Product Update**



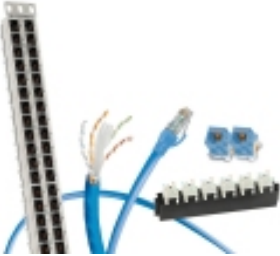
### **FiberExpress Ultra Patch Panel System**

Belden® FiberExpress Ultra is the culmination of Belden's commitment to providing innovative and reliable fiber patching solutions. The patch panel system has been built around three core concepts: ultra high density, ultra easy installation and maintenance, ultra flexibility and manageability.

Belden's cost effective, labour-saving fiber optic solutions are designed to deliver optimum network uptime and low total cost of ownership. More information can be found in the New Product Bulletins NP 284, 285, 286 and 287.

- [NP 284 FiberExpress® Ultra Patch Panel System](#)
- [NP 285 FiberExpress® Ultra Cassettes](#)
- [NP 286 Belden FiberExpress® Ultra Splice Tray Kits and Enclosures](#)
- [NP 287 FiberExpress® Ultra Bezels and Frames](#)

[Back to top](#)



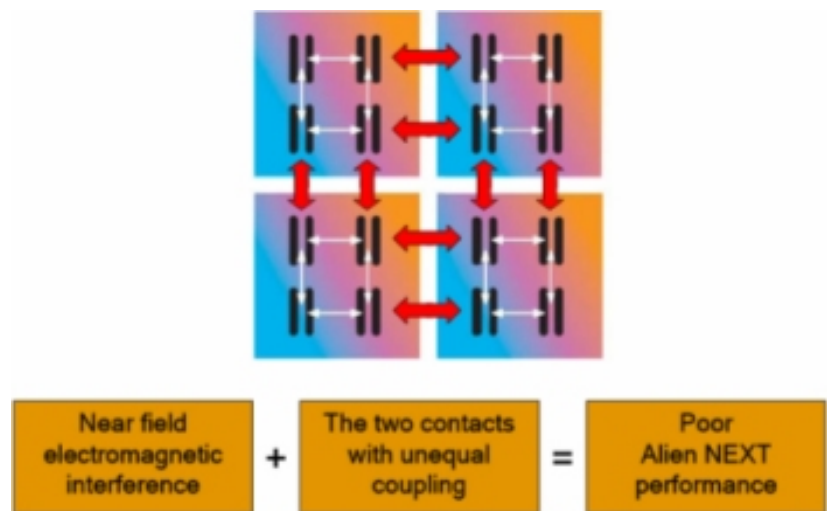
### Belden 10GX Enabling Technologies

Belden has invested considerable resources in the development of a complete end-to-end solution for 10 Gigabit Ethernet over augmented Category 6 cabling. The 10GX solution incorporates several innovative technologies that greatly exceed the state of the art performance of Category 6 cable and related connectivity designs which are available in the marketplace.

#### Matrix IDC

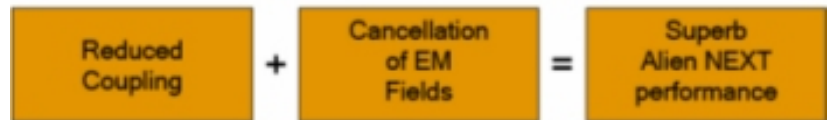
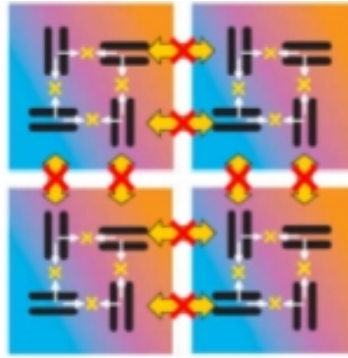
The IDC is that part of the jack where the horizontal cables are connected to the module; it is one of the most critical sources of alien crosstalk coupling.

If all the IDC contacts are aligned horizontally or vertically, the electromagnetic field coupling is very high because of capacitive unbalance and mutual inductance between adjacent IDCs. This is the case with the conventional design modules illustrated below.

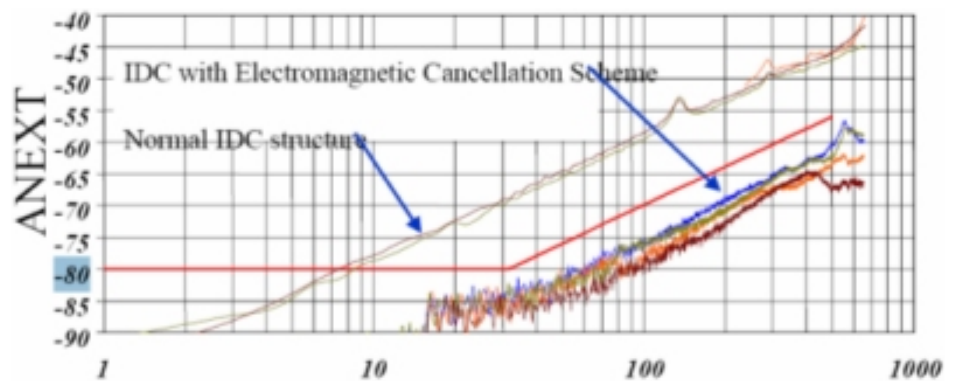


There are two approaches to reduce this effect. One approach is to use shielding or physical separation. The alternative and better approach is to use a novel design where crosstalk coupling between adjacent IDCs cancels itself out. The patent pending MatriX IDC Technology is a design where each pair of IDCs is positioned at 90 degrees to its neighbours. The impact of this configuration is quite astonishing because it reduces the ANEXT between pairs of adjacent modules by 15dB.

The MatriX IDC Technology is illustrated below. The orthogonal alignment of adjacent IDCs positions the electric and magnetic fields so that they cancel out differential mode coupling, effectively eliminating the alien crosstalk at the point of connection.



The improvement in alien crosstalk performance is remarkable. The illustration below demonstrates the performance of Power Sum Alien NEXT for a patch panel of conventional design compared with a patch panel using MatriX IDC Technology.



[Back to top](#)

## Application Update



### NASA turns to Belden to deliver mission critical 10 Gigabit Ethernet Network

The Belden name is synonymous with high quality, high performance and reliability and this is readily endorsed by its customers. As further proof, Belden is delighted to announce that the IBDN 10GX system has been installed as part of the sophisticated technology at the NASA Kennedy Space Centre.

To find out more about how Belden is exceeding the standards and expectations of the Kennedy Space Centre, follow the link below.

- [Belden® Launches System 10GX® at NASA's Kennedy Space Center](#)

[Back to top](#)

## Contact Details



If you would like any further information on any Belden products, please contact our sales team:

EMEA Headquarters +31 (0) 773 878 555

UK Office +44 (0) 161 498 3728

For other Belden EMEA locations and contacts, please visit [www.belden-emea.com](http://www.belden-emea.com)

[Back to top](#)

## EMEA Catalogue



To find out more about Belden EMEA products and services and/or to download the Belden EMEA Master Catalog, please visit [www.belden-emea.com](http://www.belden-emea.com)

[Back to top](#)

---

If you do not wish to receive promotional emails from Belden, please [click here](#).  
P.O. Box 9 - 5900 AA Venlo - The Netherlands // Phone: +31 (0)70 387 85 55