

To view this email as a web page, [go here](#)

To ensure future delivery of emails please add marcomm.emea@belden.com to your safe sender list or address book



Issue 3, February 2009



Belden Structured Cabling Solutions

The Belden brand is synonymous with high quality, high performance and reliability. Belden products and services cover the following markets: buildings, industrial, infrastructure, broadcast, transport and residential.

Belden offers a wide range of signal transmission products that include networking cables, components and connectivity. Collectively they are designed to deliver high quality performance enhancing the overall capability of the network.

In this newsletter we provide an overview of our latest technology advances, structured cabling products and industry related information. We welcome your feedback.

Knowledge Update

Total Enterprise Networks™ from Belden simplify building operations and lower costs

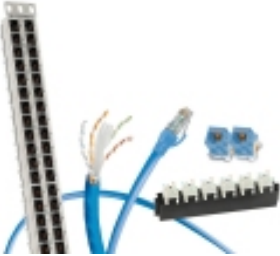


From the data center, LAN and WLAN, to building management, audio/video, security and alarm systems, Belden® Total Enterprise Networks deliver signal transmission solutions that provide the most advanced technology and greatest reliability. In fact, only Belden has the:

- Broadest range of infrastructures available to provide a specific set of solutions for your networks, customized to your needs
- Flexibility to suit your current needs while providing a migration path for future integration plans
- Distribution and installation channels to make it all happen today

To learn more from the "Total Network" experts visit www.Belden.com/Enterprise
Or view the [Belden Total Enterprise Networks Brochure](#).

[Back to top](#)



Tackling space and resource issues

*Want to face the credit crunch with only gains?
Use Gigabix from Belden.*

Most network managers or end users do not think about cabling, which is the way it should be - but often it is not. A well thought-out and properly engineered structured cabling system should operate in the background, hidden behind walls, above ceilings or under floors. It should be easy to use, flexible and reliable, and it should not draw attention to itself.

The IT manager has three options once the configuration (Cross-connect or Interconnect) has been chosen:

- 8-pin modular (RJ45) patch panels,
- Insulation Displacement Connectors (IDC based systems) using patch cords or
- IDC-based systems using cross-connect wire.

IDC-based systems can offer the same advantages as a patch panel-based system but at lower cost and much higher density. However, only a few companies have the technology to provide Category 6 compliant IDC-based solutions.

One way Belden tackles space and resource issues is with Gigabix. The Belden GigaBIX Cross-Connect solution is based on highly reliable technology using the BIX connecting block and a specially redesigned cable management system that takes into account the new reality of larger diameter cables.

The GigaBIX IDC-based system, with a transmission performance that goes beyond the Category 6 standard, is available in two topologies:

- GigaBIX Patch Cord solution
- GigaBIX Cross-Connect Wire solution

The first topology, the GigaBIX Patch Cord system, is a plug-and-go solution that offers the same advantages as a patch panel but with 20% higher density and 20% lower cost. This uses patch cords designed to interface with the GigaBIX connecting block.

The second topology, the GigaBIX Cross-Connect Wire system, doubles the density at a significantly reduced cost when compared to a patch panel solution. This solution is by far the most cost-effective configuration. It is significantly lower in material cost when compared with a patch panel solution. It also utilises an unjacketed GigaBIX Cross-Connect Wire to comply with IBDN 4800LX channel specifications. GigaBIX Cross-Connect Wire uses tightly twisted pairs stranded together for maximum transmission stability. The conductors are insulated with FEP material to meet the most demanding fire rating compliance (CMP).

Benefits

With a global economic meltdown that is leading us full throttle into a very uncertain future, it is apparent that we will all be affected unless we offer viable alternatives in the structured cabling industry to continually drive down costs. Since the inception of structured cabling, the basic tenet of the products has been based on traditional US telephony architecture, whilst the supporting infrastructure remains firmly entrenched in the past of the electrical industry. Now it is time for change!

The largest of all opportunities for change involves the removal and reliance on 19" enclosures for the passive cabling solution. Whilst the principle of cool aisle layout for the data-centre is understood, the design is still enforced on the passive cabling; when in reality it is only the active equipment that requires cooling. We often see the cabinet layout design encompass both the passive and the active. However, a correctly designed open frame can sit within a 600mm x 300m floor space, which in turn will double the density available and reduce overall costs, in excess of 50% over the traditional enclosure. Two frames can be used (if required) to sit between the active enclosures to provide the patching fields, doubling the density or halving the cost if only one frame is required.

Comparison of systems:

	RJ45 Patch Panel X Connect	BIX -Patch Cord X Connect	BIX-X-Connect Connect
Critical Technologies		IDC Connector Patch Cords	IDC connector Cross-Connect wire
Performance	Up to Cat7	Cat 6 and up Some manufacturers do not provide this solution	Cat 6 and up Few manufacturers provide this solution
Density	30 ports per sq. ft.	40 ports per sq. ft. 30% improvement	60 ports per sq. ft. 100% improvement
Administration (Patching)	Very easy Modular cords, 8mod-8mod	Very easy Modular cords BIX-BIX Modular cords BIX-8mod	Trained Personal Cross-Connect wire
Investment Cost	High	Approx. 20% lower	Approx. 40% lower
Note	Patching can be performed by end-user	Patching can be performed by end-user	MAC is performed by trained technicians

[Back to top](#)

Application Update



Gigabix reduces floor space requirement by 50%

This application report highlights how in a real life situation Belden's Gigabix Cross-Connect System can create huge savings in floor space, energy costs, maintenance and much more. While still exceeding the standards and providing capacity for future growth.

To read more on how Belden's Gigabix system helped Birmingham University, go to [Effective Structured Cabling Solution for Birmingham University](#)

[Back to top](#)

Contact Details



If you would like any further information on any Belden products, please contact our sales team:

EMEA Headquarters +31 (0) 773 878 555
UK Office +44 (0) 161 498 3728

For other Belden EMEA locations and contacts, please visit www.belden-emea.com

[Back to top](#)

EMEA Catalogue



To find out more about Belden EMEA products and services and/or to download the Belden EMEA Master Catalog, please visit www.belden-emea.com

[Back to top](#)